



17654 Fordtran Blvd.
Industry, Texas 78944
+1 (979) 357-2243
www.tracww.com

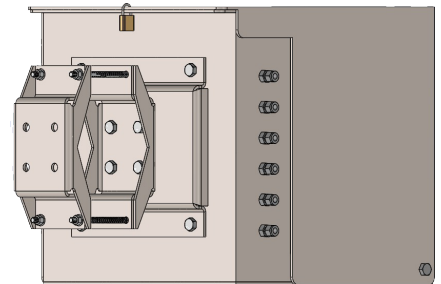
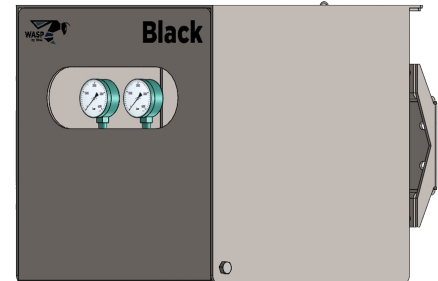


Black WASP

Wellhead Automation & Safety Panel

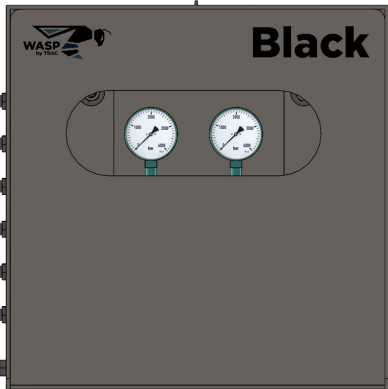
The Black WASP is an Anti-Theft, Completely Integrated wellhead valve control system that uses an external hydraulic source working with an internal set of High / Low pressure sensors, fire detection and local shutdown. The unit guarantees an orderly shutdown of Well Operations by executing a Top (Wing/Main) to Bottom (Subsurface) valve closing with adjustable time delays between each step.

The system is equipped with quick access ports for connection to a portable pump to open and precharge actuators of the Surface Safety Valve (WV, SSV) and Surface Controlled Subsurface Safety Valve (SCSSV), and at the same time provide pressure to the pressure sensing circuit. Standard operating pressure can be designed according to customer needs from 900 psi (60 bar) - 20,000 psi (1,400 bar). Optional Remote ESD, Fuse Plug ports, Solenoid Valve shut-in and Monitoring Instrumentation (SCADA-RTU) are available.



The Black WASP is suitable for remote locations without the benefit of an available power source such as air, gas or electrical power; and can be used where high concentrations of hydrogen sulfide are present. The Black WASP can be applied to marginal oil and gas fields that require simple, reliable, low cost system for monitoring pressure, fire and shutdown.

- Quick connection access ports for use of a shared Mobile Pump (Manual or Electric).
- Easy installation - self-contained modular unit for stand alone operation. *Sold separately.
- Integral Anti-Theft Shroud, Padlocking ready.
- Easy component access, no obstructions.
- Flexible mounting options: On the actuator, Flow Line or Stand.
- Simple design - easy to operate and few components, less maintenance.
- Durable - tube fittings made of AISI 316 stainless steel.
- Tubing is seamless type, AISI 316L stainless steel. Other materials available.
- Versatile - operates at any position angle from 0 to 90° (Bracket Solution).
- Mounting Brackets available for different Actuator and Flow Line sizes.
- Hydraulic Reservoir Integral to the enclosure.
- PISTON type Hydraulic Accumulator for thermal expansion compensation.
- OPTIONAL SOLENOID for Remote Shutdown Operation (ATEX, UL, CSA).
- QUICK EXHAUST for SSV.
- Superior weather proof Design with no drip-in surfaces.
- Universal design for Horizontal, Vertical, Multiple Pump/Pressure Applications.



MECHANICAL

Dimensions (H)x(W)x(D)	406(16) x 406(16) x 406(16) mm (Inches) Standard size, tailored sizes available.
Fab materials	Stainless steel 316
Degree of protection	Estimated to IP66 (NEMA 4X)
Weight empty	50 Kgs (110 lbs)
Weight filled	55 Kgs (120 lbs)
Temperature	-30 to 120°C (-20 to 250°F) *Other ranges available.

OPERATIONAL

SSV & SCSSV pressure range	Independent circuits may be order from 900 psi (60 bar) to 20,000 psi (1,400 bar).
Pressure sense line	LOW and HIGH Pressure switch options configurable from 0.5 to 20,000 psi. Factory adjusted range is 300% minimum range value. Specified by customer.
Bypass valves	STARTUP Pressure Sense Bypass Valve.
Local shut-in valve	Manual Shut-In Valve.
Reservoir	<ul style="list-style-type: none"> Integrated internal atmospheric pressure with Sight. Glass and Vent/ Filler Cap. Capacity 7.5 Liters (2 Gal). Oil Tank Level Sight Glass. All indicators are visible through Integral Lexan Window.
Local indications	<ul style="list-style-type: none"> Multiple Pressure Circuits. Indicating Gauges and Control Circuit Tatile Tale Indicator.
Pumps	<ul style="list-style-type: none"> External/ Shared Portable Unit. Hand or Electrical options available. *Sold separately. Multiple pumps for Different Pressure Circuits as required.
Hydraulic Accumulator / Dampener	<ul style="list-style-type: none"> Pre-charged Nitrogen, Piston Type Hydraulic Accumulator / Dampener for Surface Pressure Circuits. Thermal volume changes are absorbed over a wide temperature range and eliminates. Relief valve opening due to thermal expansions of the hydraulic fluid.
Connections	<ul style="list-style-type: none"> SSV: 1/4" NPT Female Bulkhead Connector. SCSSV: 1/4" NPT Female Bulkhead Connector. PRESSURE SENSE: 1/4" NPT Female Bulkhead Connector. ESD Remote (Optional): 1/4" NPT Female Bulkhead Connector. ESD Return (Optional): 1/4" NPT Female Bulkhead Connector. PRESS CALIBRATE (Optional): 1/4" NPT Female Bulkhead Connector. FILLING PORT: 3/4" NPT Female Bulkhead Connector. FUSE PLUG PORT: 1/4" NPT Female Bulkhead Connector. Reservoir Out. Surface Circuit In. Subsurface Circuit In.